

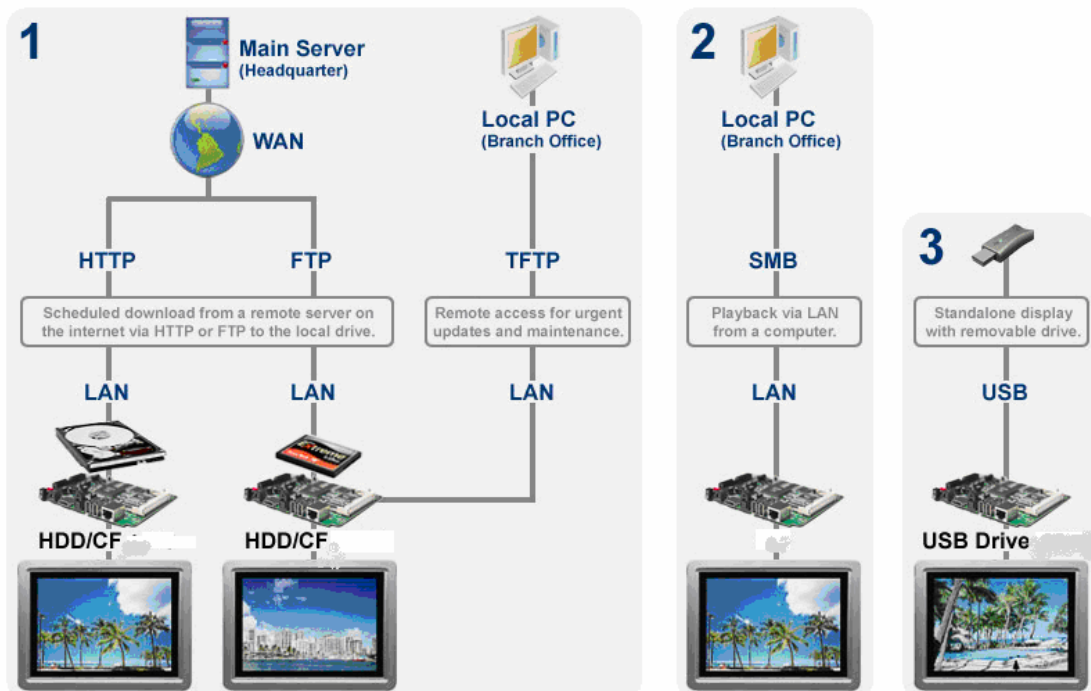
Digital Media Adapter-M1 MiPG8-M1 (D8-M1)

Advanced Advertising System

The MiPG8-M1 (D8-M1) is the ideal device for all your professional advertisement system requirements. The robust metal housing provides both protection and ventilation for internal components, and VESA mount design to securely fasten the unit to the back of most standard flat panels. With included wireless kit, real-time clock (RTC) and watchdog timer (WDT), this system can be used just about anywhere for targeted advertising with up to date content playing from its internal CF card, all maintained from a central server.

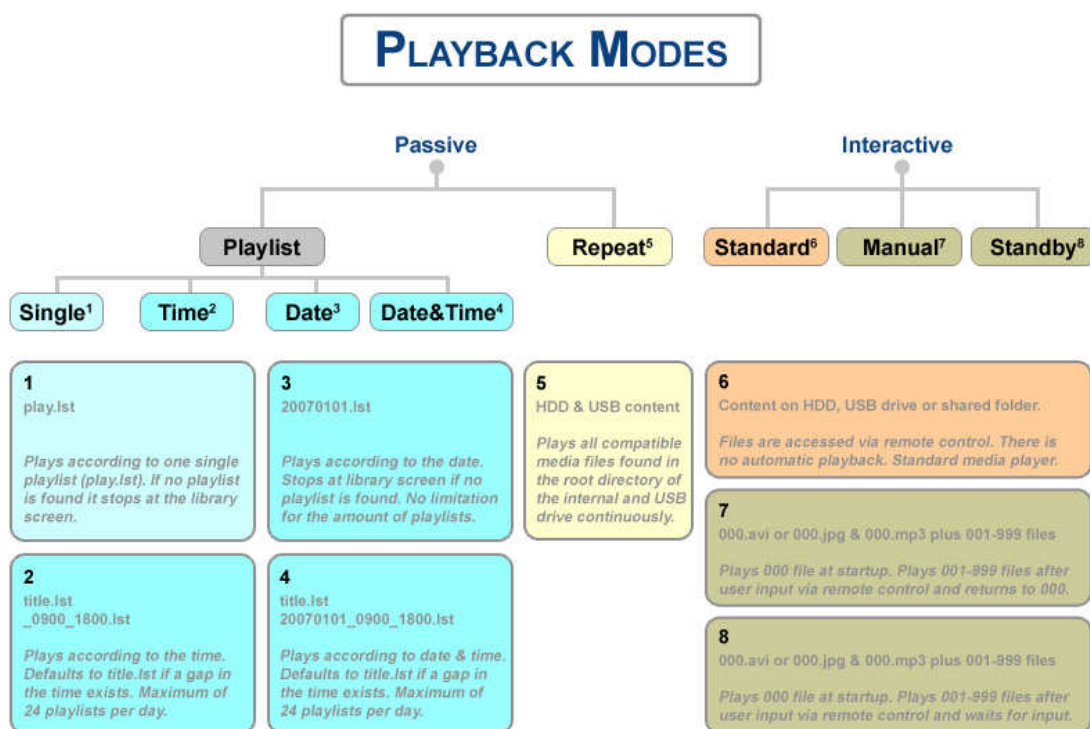
Advanced Advertising System

ADVANCED ADVERTISING SYSTEM



The MiPG8-M1 (D8-M1) digital media adapter is connected to your local network using a standard Ethernet or wireless connection, enabling you to access and broadcast content from any computer on your network. Combined with its ability to access a remote server over the internet, new content can be downloaded over night and stored on the local drive. Using the playlist function, this system can be used for targeted advertisement with up to date content, all maintained from a central content server.

Playback Modes



File Formats

Connected to the TV or any other display with the corresponding video inputs, it can playback media files such as videos, music and photos directly from its CR card, attached USB drives or via local network. The MiPG8-M1 (D8-M1) supports video formats like MPEG-4 (AVI, XviD), high definition WMV9 and even uncompressed high quality ISO files!

Only with the MiPG8-M1 (D8-M1) can you play DVDs (using the .ISO format) and watch them as if they were running from the original disc. Yes, that includes the menu, chapter selection, audio channels, subtitles and extra features just like on your standard DVD player. Instead of burning your sales or product presentation onto a DVD disc, you can prepare that multilingual product introduction as you usually would but then save it as .ISO file and store it directly on the hard disk of the MiPG8-M1 (D8-M1).



MiPG8-M1 (D8-M1) Features

- ✚ Hardware and software watchdog timer (WDT)
- ✚ Real time clock with battery (RTC)
- ✚ Multiple playlist support to allow scheduled content playback
- ✚ Scheduled content download from HTTP or FTP server
- ✚ Upload function to get feedback via FTP (system logs and any other files)
- ✚ Automated play modes for easy setup
- ✚ USB auto-copy function for easy updates by staff
- ✚ Firmware upgradeable through CF card, USB drive or network
- ✚ Up to 1080i high definition video output
- ✚ ISO and WMV 9 high definition playback support
- ✚ 802.11 b/g wireless connection with WEP 64-bit and 128-bit support
- ✚ Samba Network Protocol support



Product Index – Digital Media Adapter-M1

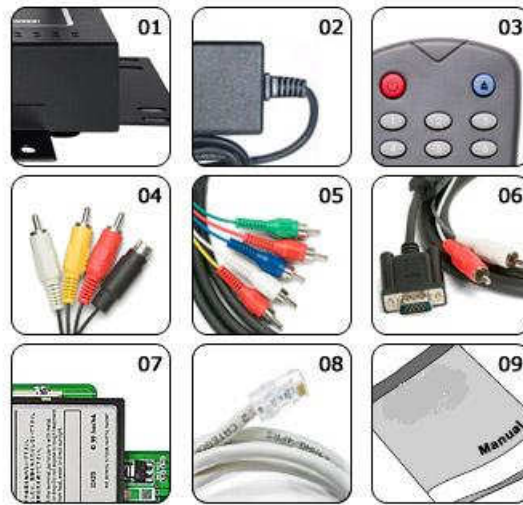
MiPG8-M1 (D8-M1)

Specification	
Model No.	MiPG8-M1 (D8-M1)
Bridge Chipset	Powered by Sigma Design 8621
Casing	Steel casing with mounting holes (VESA mount design)
Internal Storage	One CF card (adapter for 2.5" IDE drive available on request)
Playback Formats	<ul style="list-style-type: none"> ✧ Video: MPEG-1, MPEG-2, MPEG-4, WMV9 (up to 720p), ISO ✧ Audio: WAV, MP3, WMA, AC3, OGG ✧ Photo: JPG
Supported USB devices	Mass Storage class devices using FAT12, FAT16 or FAT32 including USB hard drives, card readers and USB memory sticks. Note: USB hubs are not supported!
Input Interface	<ul style="list-style-type: none"> ✧ USB 2.0 High Speed (USB1.1 backwards compatible) ✧ Ethernet 10-baseT/100-baseT ✧ Wireless 802.11b/g with WEP 64-bit and 128-bit support
Output Interfaces	<ul style="list-style-type: none"> ✧ Video NTSC/PAL: Composite Video S-Video Analog Component Video up to 720p and 1080i SCART RGB (optional cable) VGA up to 1024x768 ✧ Audio: Dual Stereo Analog Audio SPDIF optical output (optional cable)
System Requirements *	<ul style="list-style-type: none"> ✧ Windows XP Home or Professional ✧ 10/100Mbps Network and Internet connection ✧ Network switch or router ✧ TV or display with video/audio input (Composite RCA or better yet S-Video or Component RCA) ✧ Optional amplifier with surround speaker system
Power Supply	<ul style="list-style-type: none"> ✧ External Power Adapter universal auto-switching (UL, cUL) ✧ Input: AC 100-240V ✧ Output: DC +12V/2A
Product Size	22cm x 17.2cm x 3.4cm (16.9cm x 13.4cm x 3.4cm for casing only)
Standard Contents	<ul style="list-style-type: none"> ✧ MiPG8-M1 (D8-M1) (no CF card included) ✧ Infrared remote control ✧ Power adapter Input 110/220V, Output +12V/2A ✧ Composite, Component and VGA AV cable ✧ Ethernet and USB cable ✧ Manual
Optional Accessories (optional accessories available on request)	<ul style="list-style-type: none"> ✧ SCART AV converter or cable ✧ Optical audio cable ✧ Daughter board for 2.5" IDE HDD

MOQ 500pcs)	
Carton/Packing	<ul style="list-style-type: none"> ◇ Retail Box Size: 32.8cm x 20.7cm x 6.7cm ◇ Carton Size: 54.5cm x 35cm x 23.5cm (8pcs per carton) ◇ G.W.: TBA
Remarks	* To make use of all features the D8 offers, an Ethernet connection with access to the local network and internet is required, plus an internal CF card.

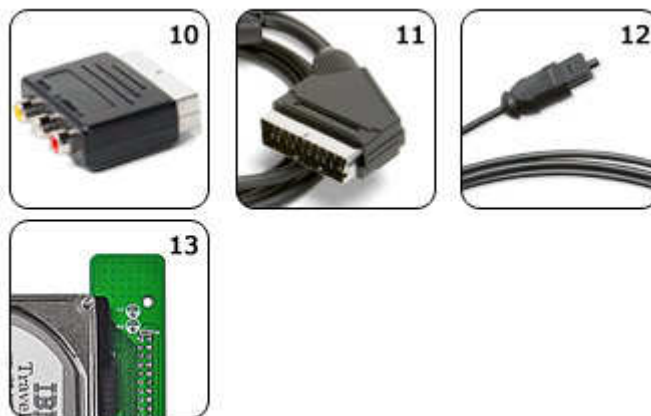
MiPG8-M1 (D8-M1) - Standard Package Contents

- [01] MiPG8-M1 (D8-M1) (no CF card included)
- [02] Power Adapter 110/240V auto switching, +12V/2A
- [03] Infrared remote control
- [04] Composite AV cable (Composite RCA, S-Video mini DIN, left audio RCA, right audio RCA)
- [05] YPbPr AV cable (YPbPr color component video - 3 RCA, left audio RCA, right audio RCA)
- [06] VGA AV cable (15-pin female VGA, left audio RCA, right audio RCA)
- [07] CF daughter board
- [08] Ethernet cable
- [09] Manual



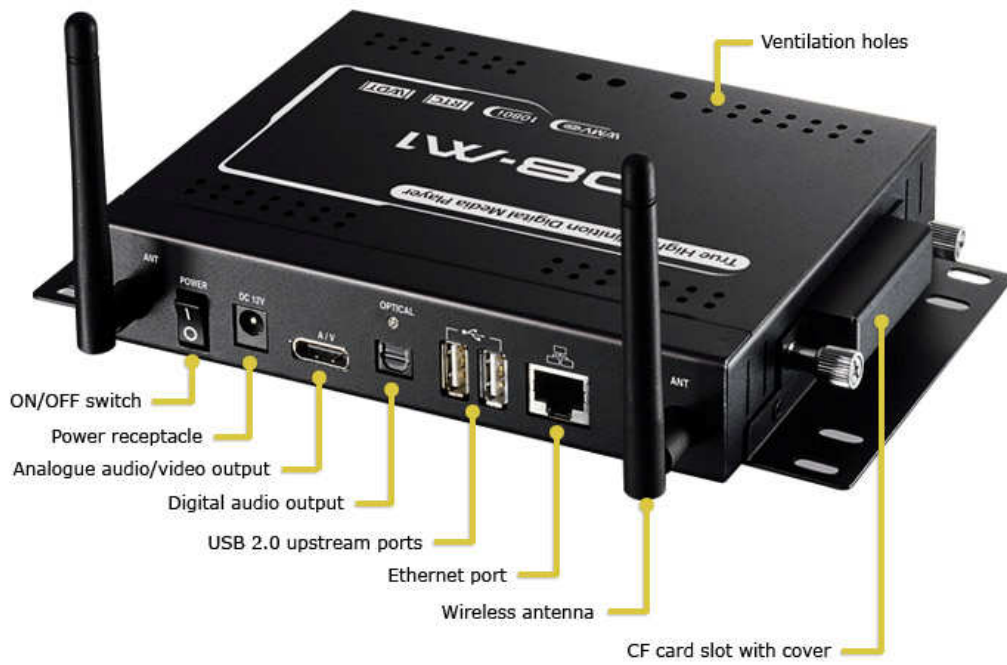
MIPG8-M1 (D8-M1)- Optional Accessories

- [10] SCART adapter
- [11] SCART AV cable (SCART cable for Europe with RGB support)
- [12] Digital audio cable (S/PDIF optical)
- [13] 2.5" IDE HDD & CF daughter board



Note: CF card and HDD are not included and only for illustration purposes.

Product Picture



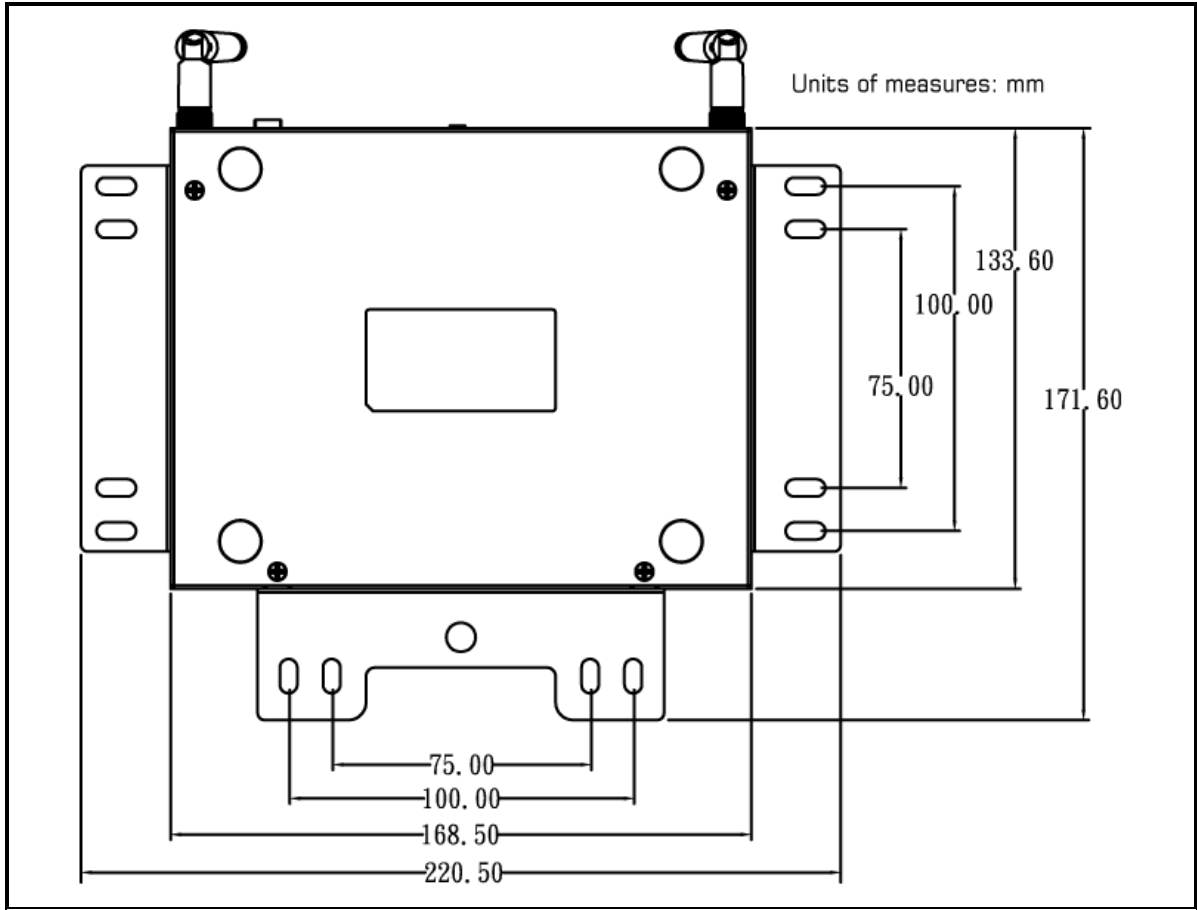


Image for reference only