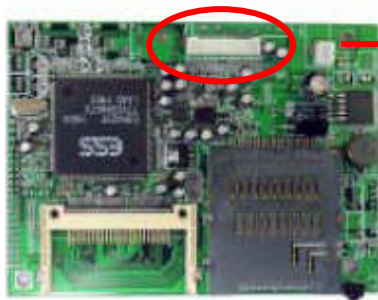


Multimedia Player Module – MP02 PCBA main board

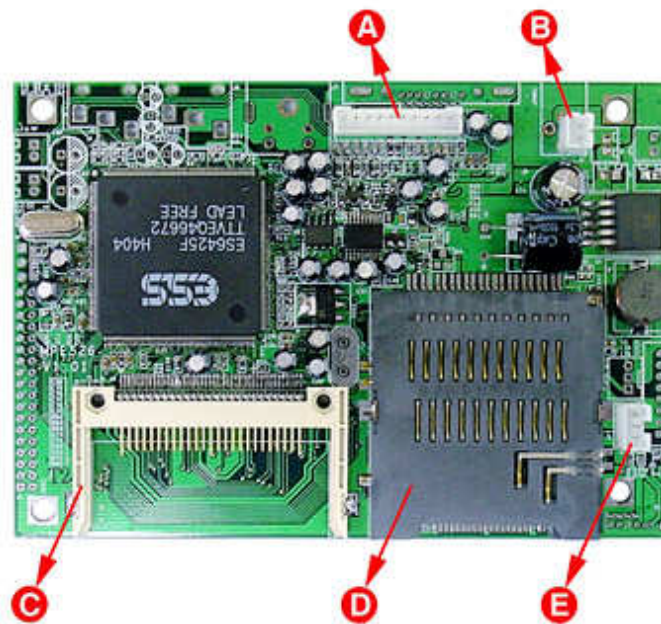
MP02 provides playback capability for most standard file formats, ready to play from any media card of your choice. This solution is also available for OEM/ODM customers in form of the customizable Player Module Main board. Firmware modification and design changes are possible on request.

“A” type PCBA format: (mass production standard)

(1) Support customize Display Output by extender Header pin



(2) Support Power Output by extender Header pin



* Image for reference only

A: Audio & video signal (extender header)

B: Power input (extender header)

C: CF card reader slot

D: 5 in 1 universal card reader slot

E: IR receiver (extender header)

● **PCB dimension: 115*80*17mm**

● **Power Requirement: DC Adapter 12V/0.35A (standard) or 5V/1A (customize)**

● **For request with Customer Logo on the background: Customer logo file size requirement for OSD with customer logo, the logo graphic for GUI may need (for ESS6425 board): 2 bmp files including 720*480 and 720*576 format**

“B” type PCBA format: (MOQ 1kpcs by 2 partial shipments @ 500pcs in 60days)

(1) Built with Audio connector, Video connector, S-video connector and VGA connector onboard.

(2) 1.3 Power jack



* Image for reference only

- PCB dimension: 115*80*17mm
- Power Requirement: DC Adapter 12V/0.35A (standard) or 5V/1A (customize)
- Customer logo file size requirement for OSD with customer logo, the logo graphic for GUI may need (for ESS6425 board): 2 bmp files including 720*480 and 720*576 format

Features:

1. Support customize Output by extender Header pin ("A" type PCBA format) or All built-in connectors ("B" type PCBA format)
2. Support Photo, Music, Video, File browser functions.
3. Support MP3, JPG, M-JPG, MPEG-1, MPEG-II. MPEG4 (. asf , Simple profile 320x240 video)
4. Support several kinds of memory card:
Compact flash type I/II, Micro drive, MMC, SD, MS, MS-Pro.
5. Photo rotate/zoom/thumbnaill/auto slide show.
6. Automatic play JPG slide show with background MP3 music
7. S-video, Composite Video, VGA, Stereo Audio output.
8. Remote controller, easy operation for file delete or copy.
9. Firmware can be upgraded by using flash memory card
10. NTSC/PAL support.
11. Can Support 12v out on/off control by remote controller
12. (Optional) Audio Speaker Amplifier (8 ohm 3W)
13. Can Display clock (24 hour)
14. Can Config Auto-Start and Auto-shutdown timer for schedule display
15. Can Config Auto-Off Sleep timer (5-120 mins)

Power Requirement (Optional): 12v 1A (standard) or DC adapter 5V 1A (customize)

Output:

- : S-video (NTSC / PAL))
- : Composite Video (NTSC /PAL), Stereo Audio
- : VGA (DSUB-15) (720x480)

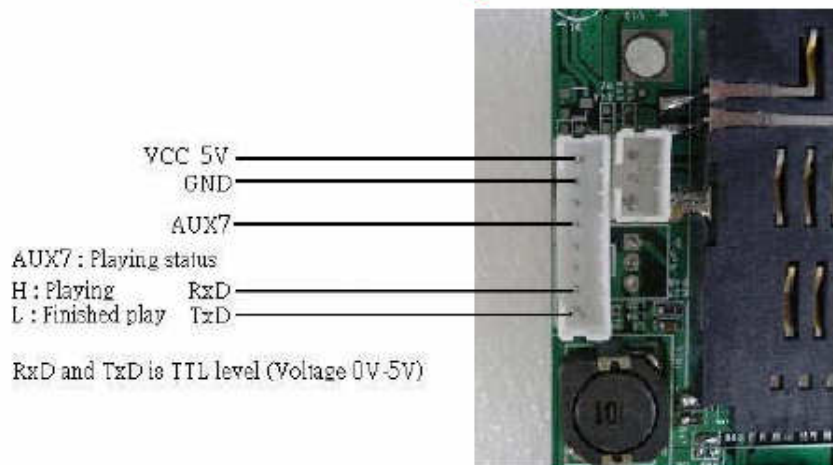
Remote Control (Optional): 24 key (slim remote controller)

Specification:

Specifications	
PCBS Kit is available for OEM/ODM customers. Use this customizable solution in your own products, adding playback capabilities for numerous file formats ready to play from any media card of your choice.	
Chipset	ESS-6425
Firmware	Upgradeable and customizable
LED Indicators	N/A (optional)
Card Reader	<ul style="list-style-type: none"> • Compact Flash type I/II • MicroDrive • MS • MS-Pro • MS-Duo • SD • Mini SD • MMC • RSMMC
Output Interface	<ul style="list-style-type: none"> • Composite Video • S-Video • VGA (DSUB-15, 720x480) • Stereo Audio
Playback formats #	<ul style="list-style-type: none"> • Video: MPEG-1, MPEG-2, MPEG-4 (*.asf , simple profile 320x240 video) • Audio: WAV , MP3 (MP3 minimum 32Kbps, maximum 256Kbps) • Photo: JPEG (JPG minimum 16x16px, maximum 5120x3840px), Motion JPEG (AVI, maximum 10fps)MPEG-1, MPEG-2, MPEG-4 (.asf, simple profile 320x240 video)
TV standards	NTSC and PAL
Functions	<ul style="list-style-type: none"> • Photo, Music, Video and File browser • Photo playback: rotate, zoom, thumbnail preview, slide show • Automatic slideshow (JPGs) with background music (MP3) • Remote control for navigation and deleting or copying files (24 key slim type controller) • Display clock (24 hour) • Auto start and auto shutdown timer for scheduled playback • Auto power off with sleep timer (5-120min) • Firmware upgradeable
Power Requirement	DC adapter 12v 1A (standard) or 5V 1A (customize)
PCB Size	11.5cm x 8.0cm x 1.7cm
Remarks	* All data and images are for reference only!

“C” type PCBA format: RS232 RECEIVER COMMAND FORMAT
VERSION 1.3

RS232 and ESS6425 connect method :



[Introduction]

This module is special for Kiosk system. This module displays blank screen after power on and waiting RS232 port command input , when receive command from RS232 port, the command will be executed, after executing command is complete then back to the blank screen state again. And It can get playing status from AUX7 pin , we also provide command M5 also can get the playing status • More query request, welcome to send us inquiry